

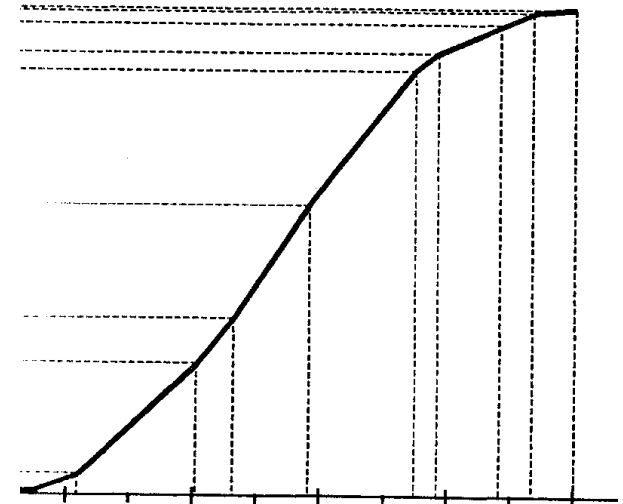
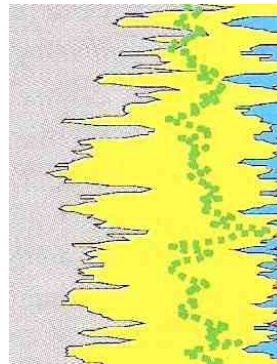
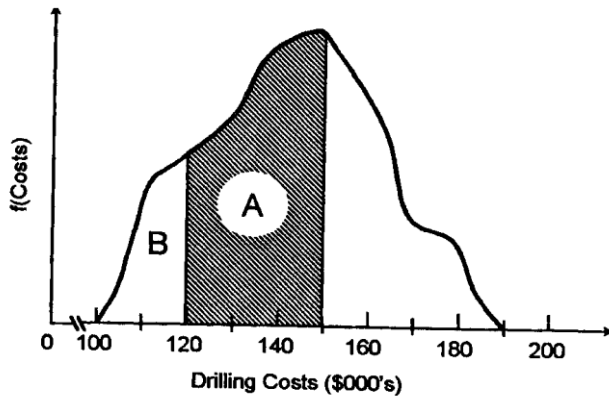
GeoNeurale

announces

Energy for Decision Makers

3 - 5 January 2011

Munich



Energy for Decision Makers

GeoNeurale - MUNICH

at the

GATE – Garching Technologie und Gründerzentrum

3 – 5 January 2011

3 DAYS COURSE

INSTRUCTOR: Dr John R. Fanchi

LEVEL: Basic

Audience: Professionals who will benefit from the course include managers in the energy industry, strategic planners, and persons who are interested in the energy industry, such as investors and environmentalists. Course materials are designed for a general audience.

COURSE FEES: 2250 Euro + 19% VAT (VAT Tax is 100% refunded from the German Finance Ministry)

REGISTRATION DEADLINE : 10 December 2010

ONLINE REGISTRATION: www.GeoNeurale.com

gate



Campus Garching

gate Garchinger Technologie-
und Gründerzentrum GmbH
Lichtenbergstr. 8
85478 Garching b. München

GeoNeurale

Office
and

Training Location



Energy for Decision Makers

By John R. Fanchi, Ph.D.

Energy may be the most important factor that will influence the shape of society in the 21st century.

The cost and availability of energy significantly impacts our quality of life, the health of national economies, the relationships between nations, and the stability of the environment.

This course discusses how energy is acquired and distributed. It examines our energy options and possible consequences.

Energy for Decision Makers

Description: Course participants will receive an overview of energy sources that will contribute to the 21st century energy mix. Participants will develop a deeper understanding and appreciation of the role of competing energy components in the energy mix. The material for this course has been developed as part of courses presented at the Colorado School of Mines and Texas Christian University.

Course Text:

Energy in the 21st Century, 2nd Edition by J.R. Fanchi and C.J. Fanchi (World Scientific, 2010)

Course Outline

Day 1:

Introduction/Energy in Society

Fossil Energy – Coal

Fossil Energy – Oil & Gas

Fossil Energy – Unconventional Oil & Gas –
Barnett Shale

Day 2:

Nuclear Energy

Solar Energy

Wind Energy

Geothermy

Energy from Water

Biomass and Synfuels

Day 3:

Hydrogen

Electricity Generation and Distribution

Energy Economics

Geopolitics of Energy

The Future of Energy

Instructor's Biography

John R. Fanchi, SPE, is Professor in the Department of Engineering at Texas Christian University in Fort Worth, Texas and holder of the Matthews Chair of Petroleum Engineering. Before this appointment, Fanchi taught petroleum and energy engineering courses at the Colorado School of Mines, and worked in the technology centers of four energy companies. He co-edited the General Engineering volume of the SPE **Petroleum Engineering Handbook**, and is the author of several books, including **Energy in the 21st Century** (World Scientific, 2005), **Energy: Technology and Directions for the Future** (Elsevier-Academic Press, 2004), **Principles of Applied Reservoir Simulation, 3rd Edition** (Elsevier, 2006), **Math Refresher for Scientists and Engineers, 3rd Edition** (Wiley, 2006), **Shared Earth Modeling** (Elsevier, 2002), **Integrated Flow Modeling** (Elsevier, 2000), and **Parametrized Relativistic Quantum Theory** (Kluwer, 1993). Dr. Fanchi has a Ph.D. in physics from the University of Houston.

Registration Details

- Course fee: 2250 Euro + 19% VAT
- Registration deadline : 10 December 2010

Payment and Registration

Tuition fees are due and payable in Euro upon enrollment in the course by bank transfer to the bank account given below unless another payment form is agreed

Unless otherwise indicated, the payment should be received before the date specified in the invoice as payment term to make the enrollment effective.

To register to the course please fill in the [registration form](#) and fax or email it along with the confirmation of your bank transfer to:

GeoNeurale

Lichtenbergstrasse 8

D-85748 Munich

T +49 89 8969 1118

F +49 89 8969 1117

ONLINE REGISTRATION: www.GeoNeurale.com

Bank Information: Genossenschaftsbank EG Muenchen

Bank Account N. 519618

BIC – Code : GENODEF 1M07

BLZ 701 694 64

IBAN : DE19 7016 9464 0000 5196 18

Please indicate your name and the purpose: "Energy for Decision Makers".

www.GeoNeurale.com

Provisions

Tuition fees are due and payable in Euro upon enrollment in the course. Unless otherwise indicated, fees do not include student travel costs and living expenses.

Payments are also accepted via personal or company check, traveler's check, credit card, and Company Purchase Orders.

Cancellations by Participant:

All cancellations are subject to a 100 Euro non-refundable cancellation fee.

Cancellations have to be notified to our office, at least 30 days prior to the course start date to receive a refund (less the 100 Euro cancellation fee).

If the participants are unable to cancel prior to the 32 days notification date, they may substitute another person at their place in a course by notifying us prior to the course start date.

Course Cancellations:

GeoNeurale reserves the right to cancel the courses if necessary. The decision to cancel a course is made at least two weeks prior to the course start date. If a course is cancelled, the participant will receive a full reimbursement of the tuition fees (but not of the plane ticket or hotel expenses or any other costs), or will be enrolled in another course upon his decision (the cost of the original course will be applied to the cost of the replacement course).

GeoNeurale can not be responsible for any penalties incurred for cancellation or change of airline or hotel reservations.

Refunds:

GeoNeurale will promptly remit all refunds of tuition fees due to cancellations or annulment (less any appropriate non-refundable cancellation fee) within 30 days of the course cancellation.

Force Majeure:

GeoNeurale can not be responsible for cancellations due to "force majeure" events: airplane or airport strikes, emergency situations, natural catastrophes and all situations and incidents independent or outside the human control that can delay or cancel the course. In case of such events related cancellations the course tuition fees will be refunded to the client.

GeoNeurale is not responsible for any delay or absence caused by the training instructor or training instructor company for reasons which are independent or out of the control of GeoNeurale's decisions.

AGREEMENT: Upon enrollment all parties accept the above mentioned provisions. The above specified provisions shall regulate the agreement between GeoNeurale and the participant and the participant company and will enter into force upon enrollment.

REGISTRATION FORM

Please fill out this form and Fax to +49 89 8969 1117

or Email to Courses@GeoNeurale.com

Energy for Decision Makers

Munich, 3 – 5 January 2011

Course Fee: 2250 Euro + 19 % VAT (VAT Tax is 100% refunded from the German Finance Ministry)

Name:

Company:

Address:

Job Title:

Phone:

Fax:

Email:

www.GeoNeurale.com

SIGNATURE: _____

INFORMATIONS, HOTELS, MAPS, LINKS

TRAINING LOCATION – RESEARCH CENTER

<http://www.geoneurale.com/documents/GATE-Y7.pdf>

GATE GARCHING

<http://www.geoneurale.com/documents/GATE-Y6.pdf>

MAP MUNICH-GARCHING

<http://www.muenchen.city-map.de/city/db/130208000001/14269/Garching.html>

MUNICH INFO and MAP MUNICH CENTRAL

<http://www.muenchen.de/home/60093/Homepage.html>

MAP MUNICH UNDERGROUND

<http://www.mvv-muenchen.de/web4archiv/objects/download/3/netz1207englisch.pdf>

HOTELS NEAR GeoNeurale

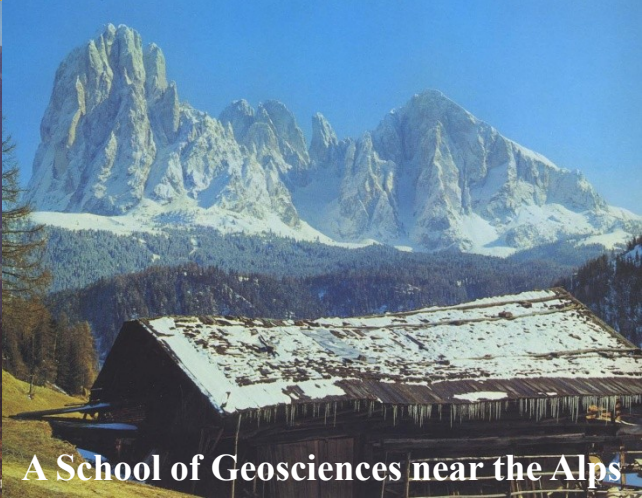
<http://www.geoneurale.com/documents/HOTELS-GARCHING.pdf>

BAVARIA INFO

<http://www.geoneurale.com/documents/Around-Munich-Info.pdf>



Blutenburg Castle - Munich



A School of Geosciences near the Alps